

Supplementary results for the ECCV'14 paper "Predicting Actions from Static Scenes"

Tuan-Hung Vu¹, Catherine Olsson², Ivan Laptev¹,
Aude Oliva² and Josef Sivic¹

¹WILLOW, ENS/INRIA/CNRS UMR 8548, Paris, France,

²CSAIL, MIT, Cambridge, Massachusetts, USA

Paper link: <http://www.di.ens.fr/willow/pdfscurrent/Vu14eccv.pdf>

IGMA: Image-based Geo-Mapping of Actions

In this document, we illustrate additional results for Image-based Geo-Mapping of Actions (IGMA) as described in Section 6 of the ECCV'14 paper. For this experiment, we use geo-localized Panoramio images obtained for France. We show images with the highest scores of an action predictor and their corresponding locations on the map. We first demonstrate successful results of action localization for actions "ski", "hike" and "swim". For these actions we qualitatively compare our results with the actual skiing and hiking stations in France obtained from <http://www.skiinfo.fr/france/carte.html> and <http://ete.france-montagnes.com/activite/randonnee> respectively. This comparison indicates high accuracy of our automatic geo-localization of actions.

We next show examples of successful action prediction for the classes "pray", "harvest", "drive" and "open door". We note that geo-localization of these actions obtained with our method is less meaningful. This can be explained by the low density of images on Panoramio preventing precise geo-localized prediction of such actions. We believe that such classes of actions could be geo-localized in the future provided denser sampling of geo-localized images.

Contents

1	Examples of successful action localization	1
1.1	ski	1
1.2	hike	3
1.3	swim	5
2	Examples of successful action prediction	7
2.1	pray	7
2.2	harvest	9
2.3	drive	11
2.4	open door	13

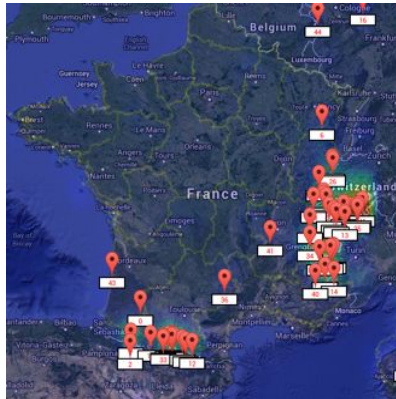
1 Examples of successful action localization

1.1 ski

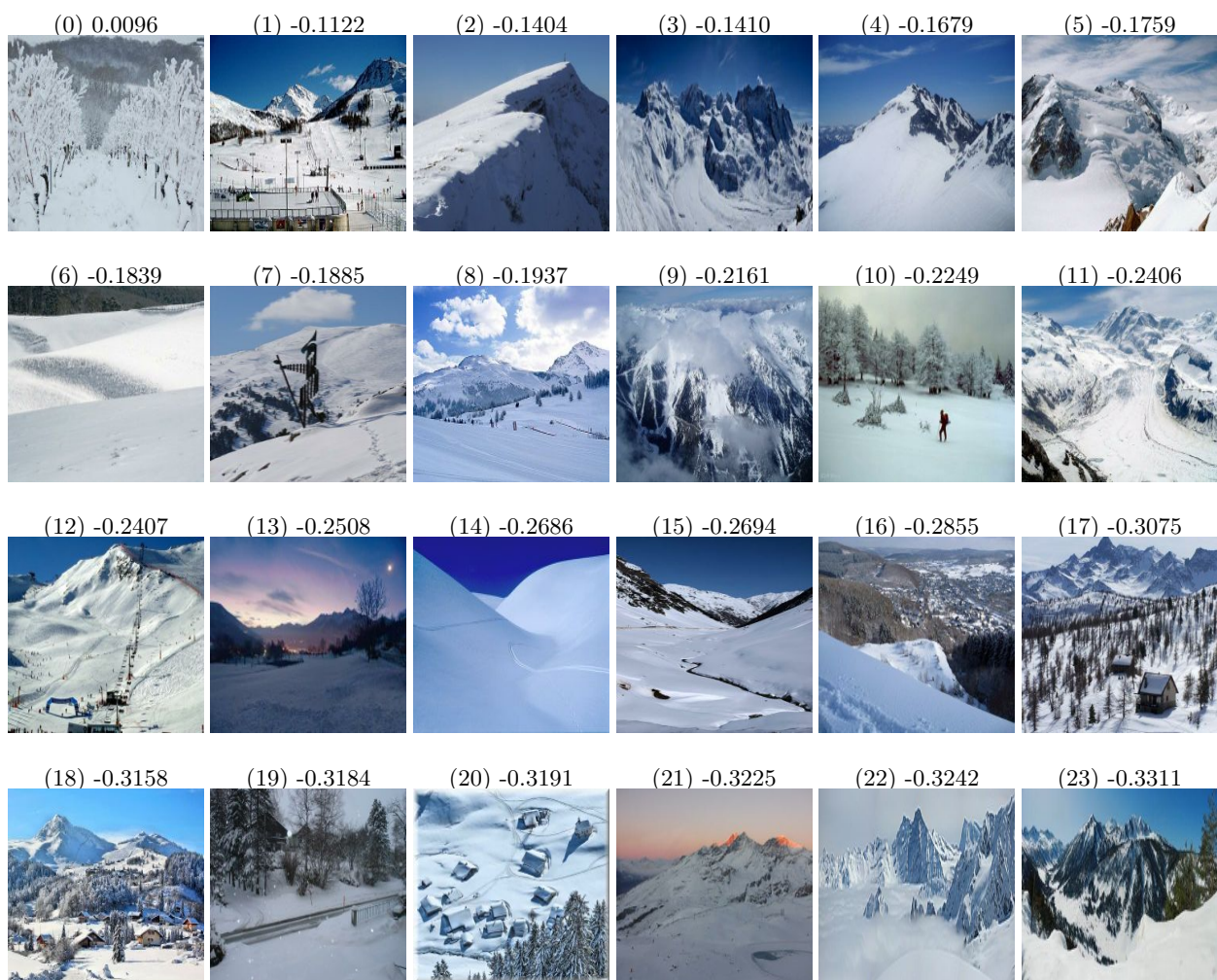
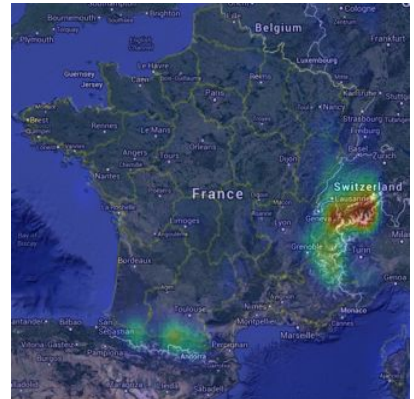
Skiing stations in France (source: <http://www.skiinfo.fr/france/carte.html>)

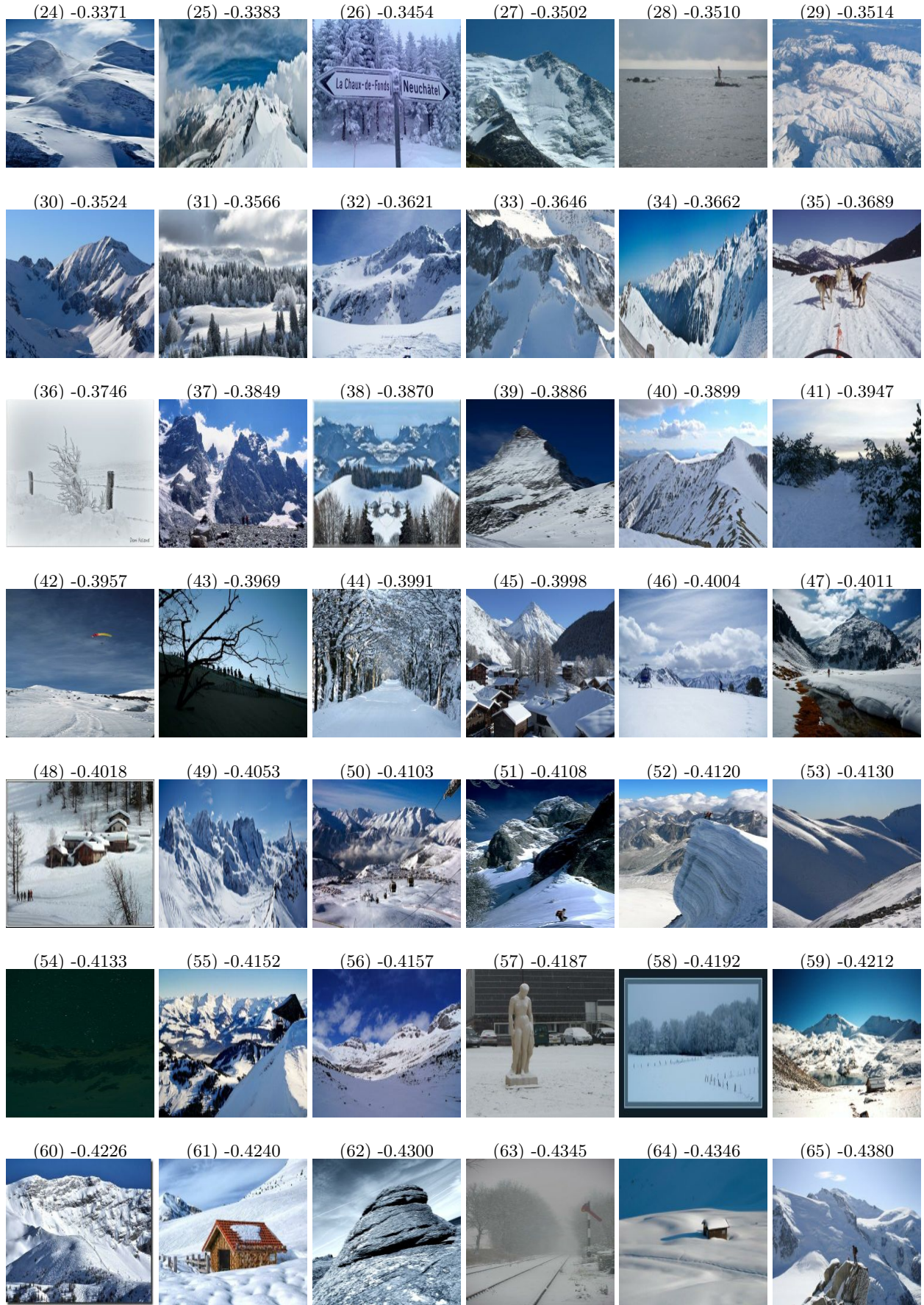


Locations for action "ski" predicted by our method



Likelihood map for action "ski" predicted by our method



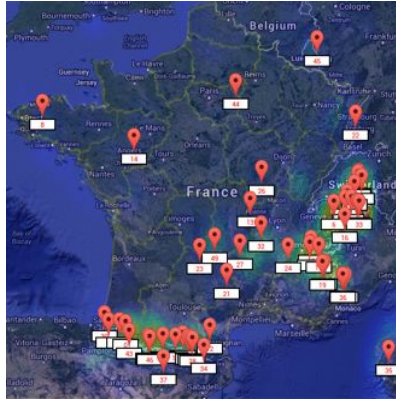


1.2 hike

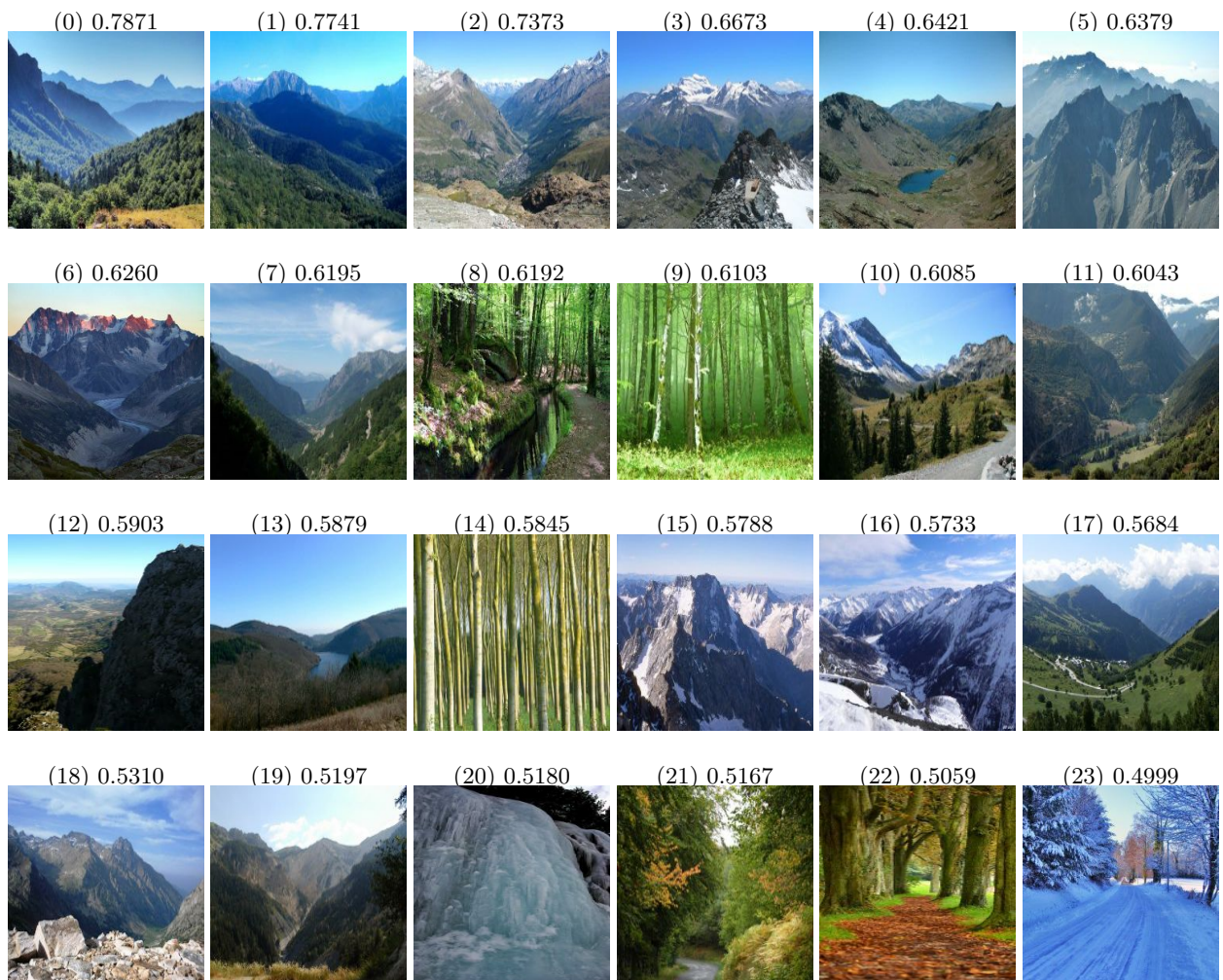
Hiking stations in France (source: <http://ete.france-montagnes.com/activite/randonnee>)

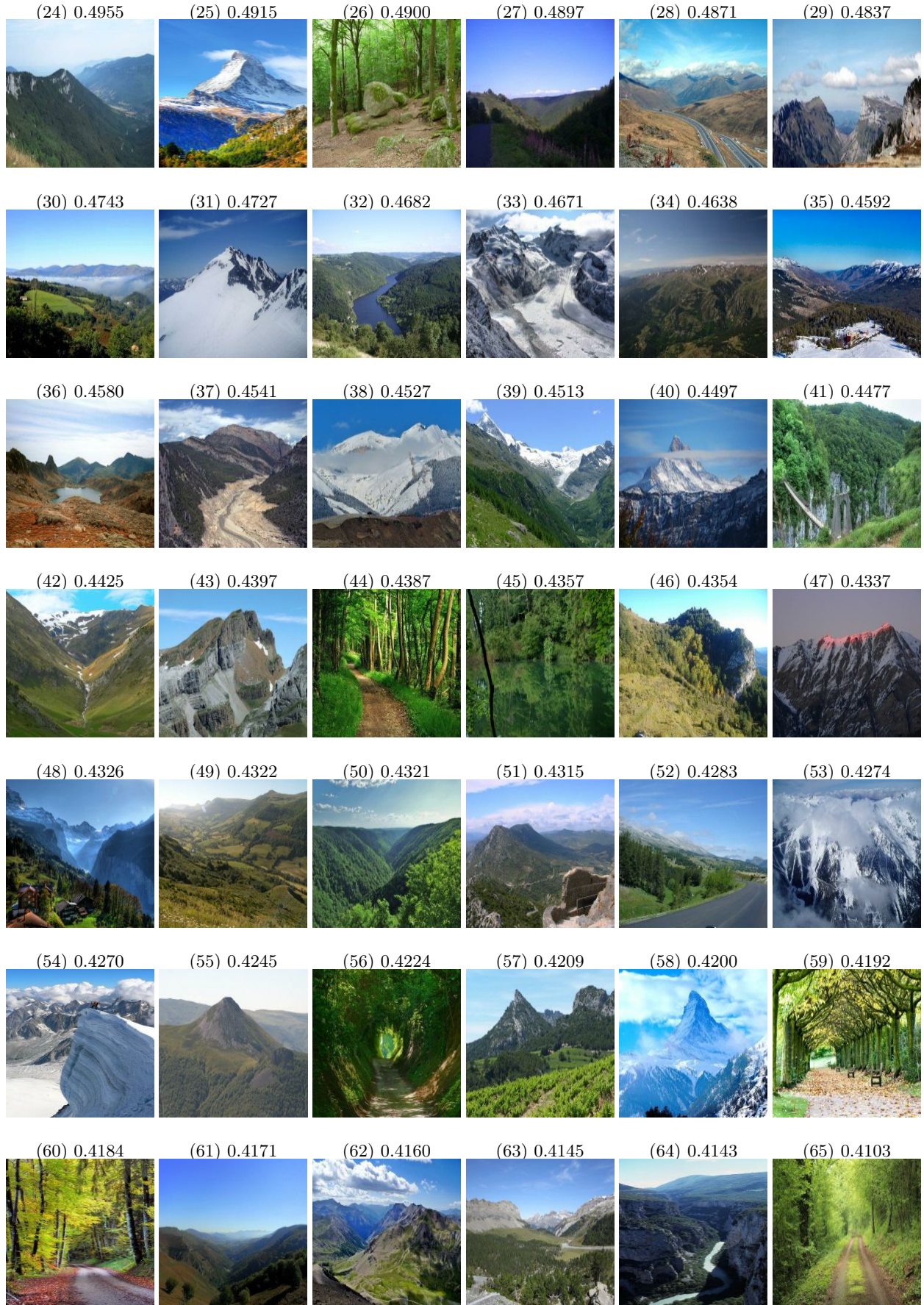


Locations for action "hike" predicted by our method



Likelihood map for action "hike" predicted by our method



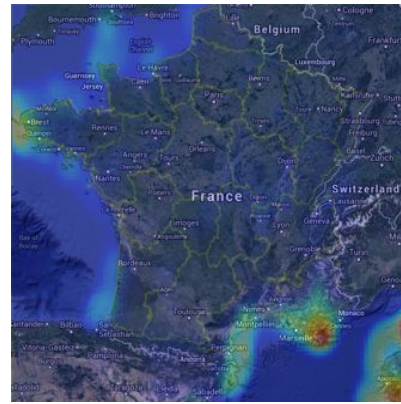


1.3 swim

Locations for action "swim" predicted by our method



Likelihood map for action "swim" predicted by our method



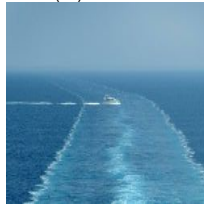
(0) 1.1753



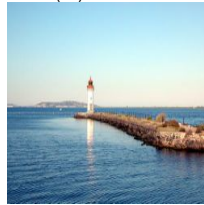
(1) 1.0260



(2) 0.9200



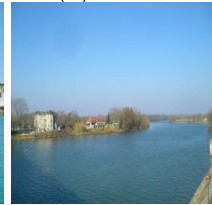
(3) 0.8219



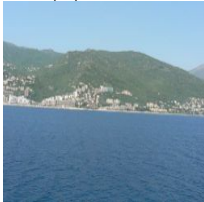
(4) 0.7774



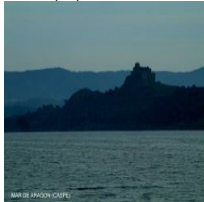
(5) 0.7541



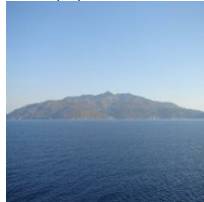
(6) 0.7495



(7) 0.7437



(8) 0.7157



(9) 0.7084



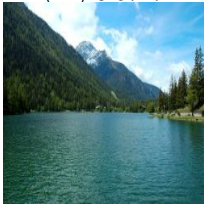
(10) 0.6891



(11) 0.6808



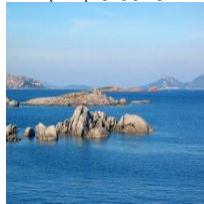
(12) 0.6717



(13) 0.6641



(14) 0.6519



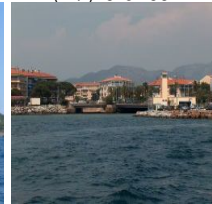
(15) 0.6493



(16) 0.6485



(17) 0.6409



(18) 0.6336



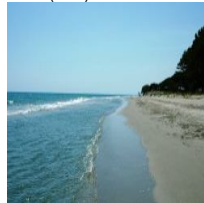
(19) 0.6302



(20) 0.6188



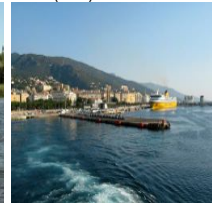
(21) 0.6158

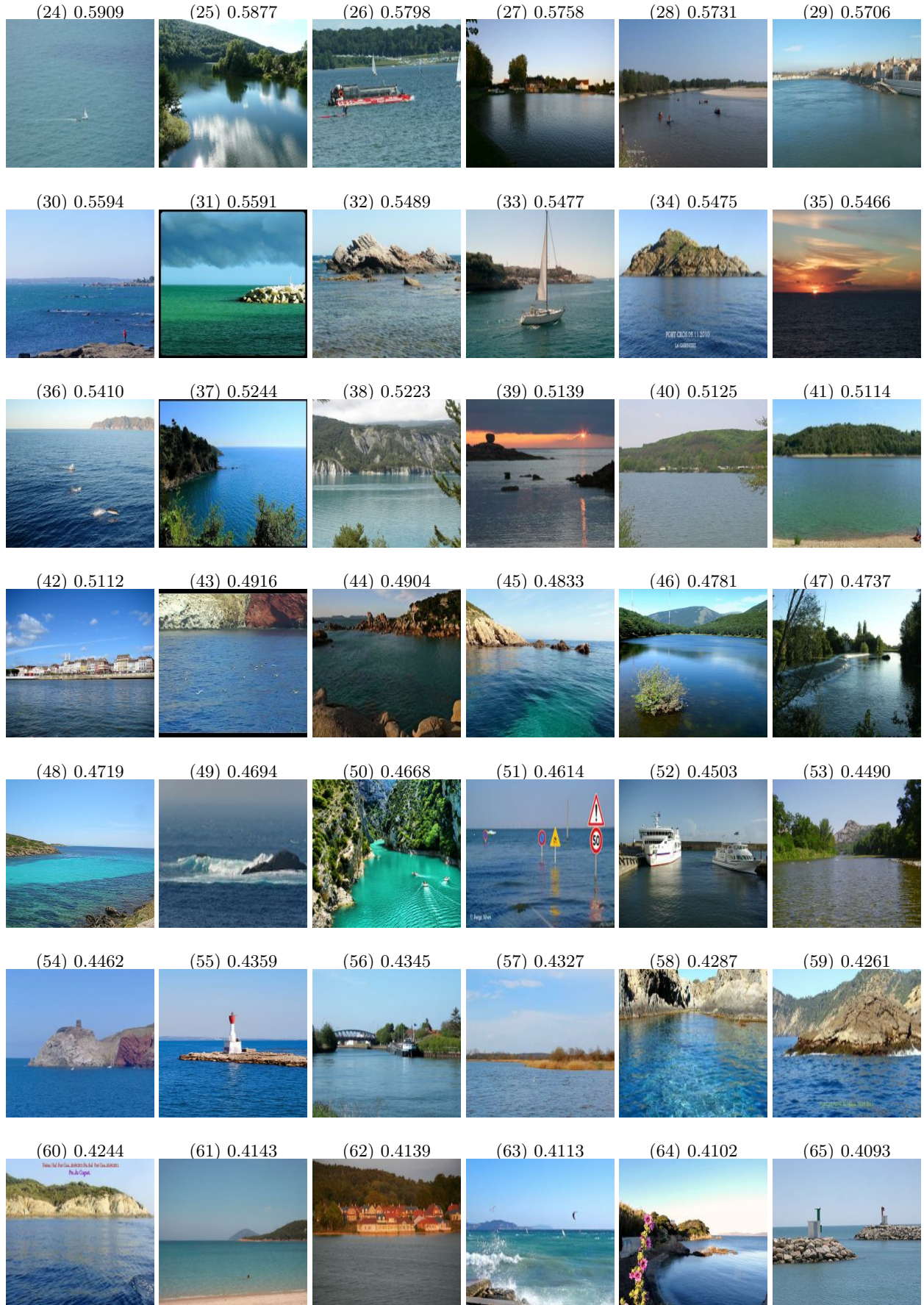


(22) 0.6093



(23) 0.5974

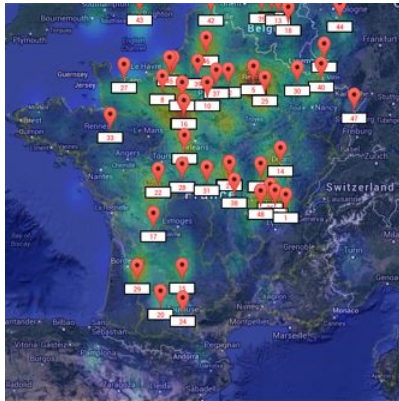




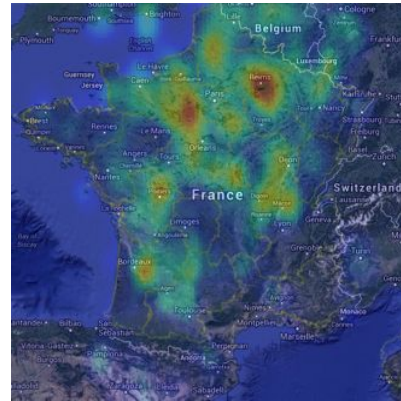
2 Examples of successful action prediction

2.1 pray

Locations for action "pray" predicted by our method



Likelihood map for action "pray" predicted by our method



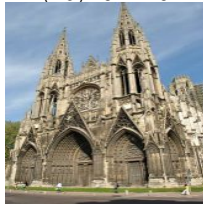
(24) -0.2048



(25) -0.2123



(26) -0.2140



(27) -0.2147



(28) -0.2195



(29) -0.2218



(30) -0.2234



(31) -0.2272



(32) -0.2278



(33) -0.2286



(34) -0.2295



(35) -0.2317



(36) -0.2361



(37) -0.2365



(38) -0.2380



(39) -0.2389



(40) -0.2400



(41) -0.2416



(42) -0.2428



(43) -0.2431



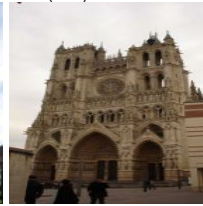
(44) -0.2438



(45) -0.2445



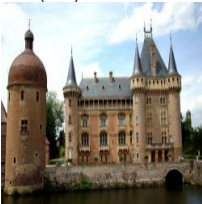
(46) -0.2468



(47) -0.2500



(48) -0.2513



(49) -0.2523



(50) -0.2525



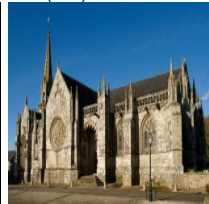
(51) -0.2539



(52) -0.2539



(53) -0.2539



(54) -0.2556



(55) -0.2576



(56) -0.2581



(57) -0.2588



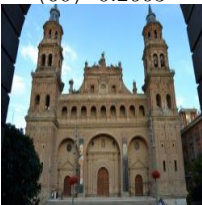
(58) -0.2639



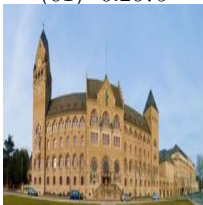
(59) -0.2656



(60) -0.2663



(61) -0.2679



(62) -0.2717



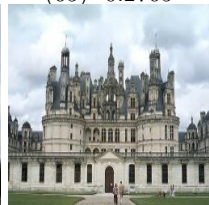
(63) -0.2723



(64) -0.2737



(65) -0.2765

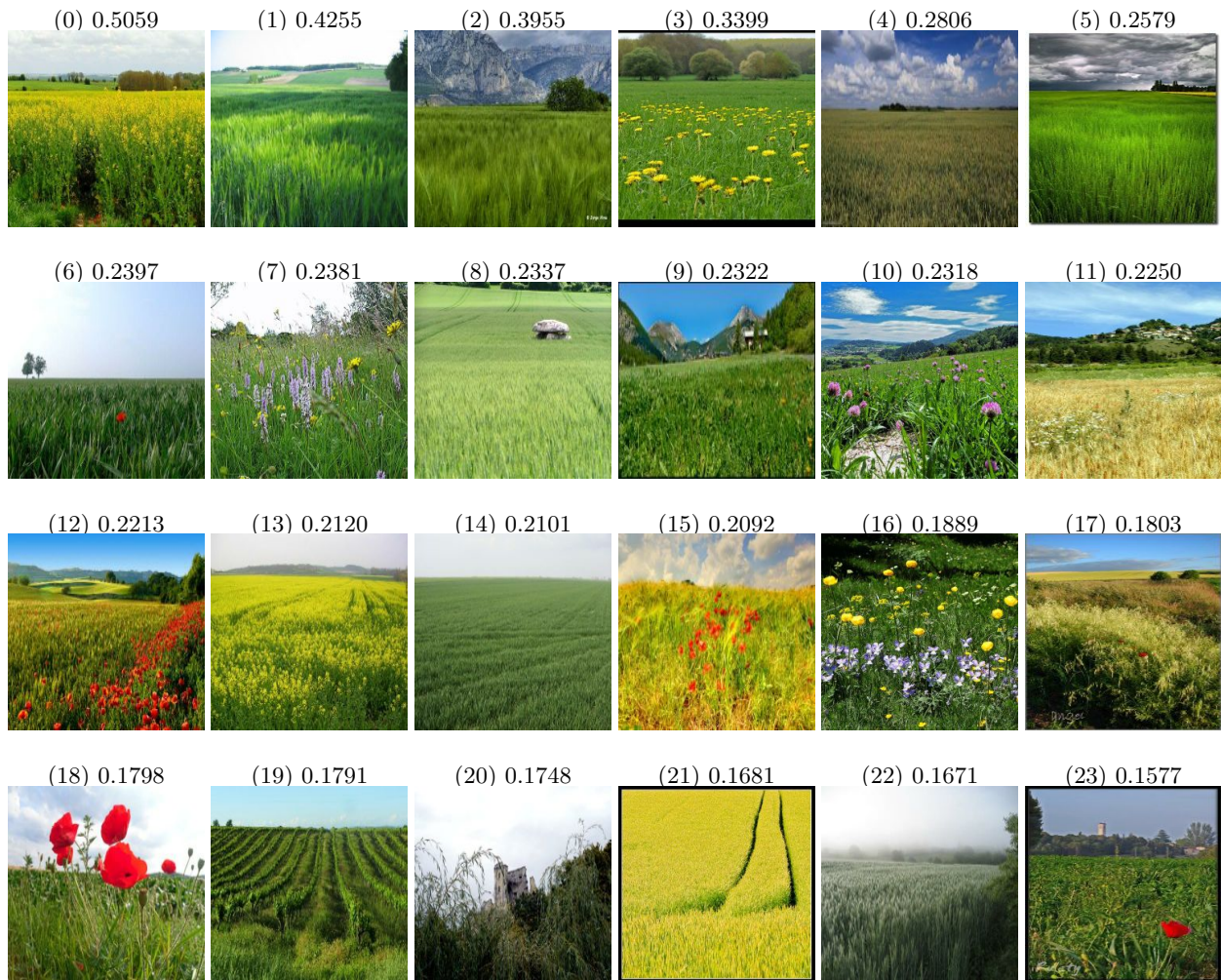


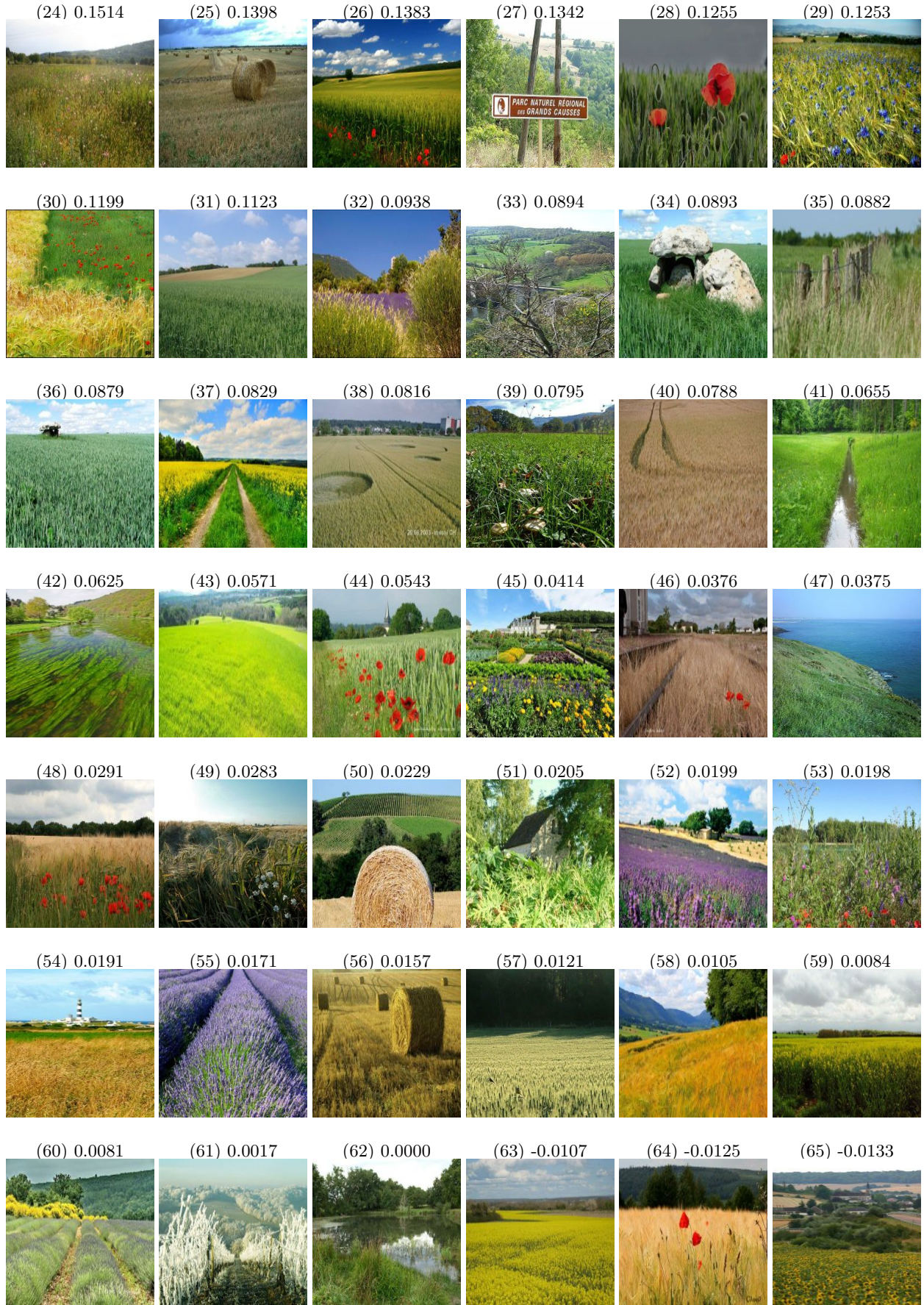
2.2 harvest

Locations for action "harvest" predicted by our method



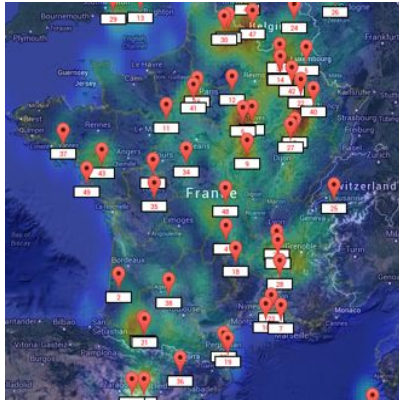
Likelihood map for action "harvest" predicted by our method



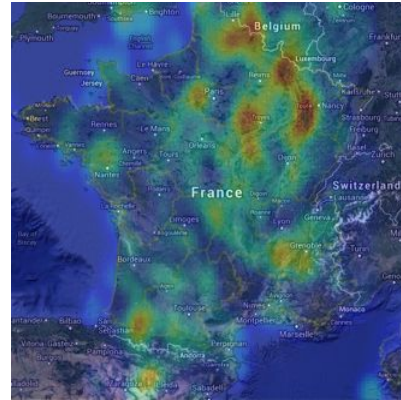


2.3 drive

Locations for action "drive" predicted by our method



Likelihood map for action "drive" predicted by our method



(0) 0.0471



(1) -0.0020



(2) -0.1030



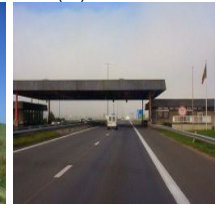
(3) -0.1351



(4) -0.1497



(5) -0.1564



(6) -0.1682



(7) -0.1780



(8) -0.1831



(9) -0.1898



(10) -0.1901



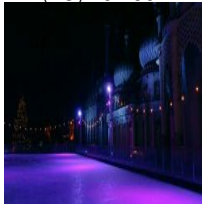
(11) -0.1939



(12) -0.1962



(13) -0.1992



(14) -0.2039



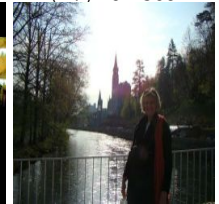
(15) -0.2094



(16) -0.2247



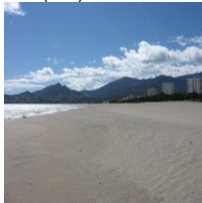
(17) -0.2309



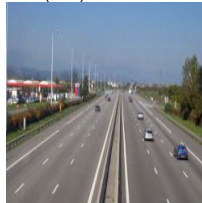
(18) -0.2310



(19) -0.2334



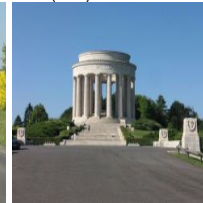
(20) -0.2369



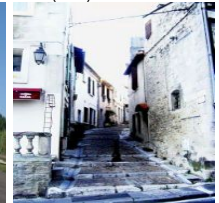
(21) -0.2407

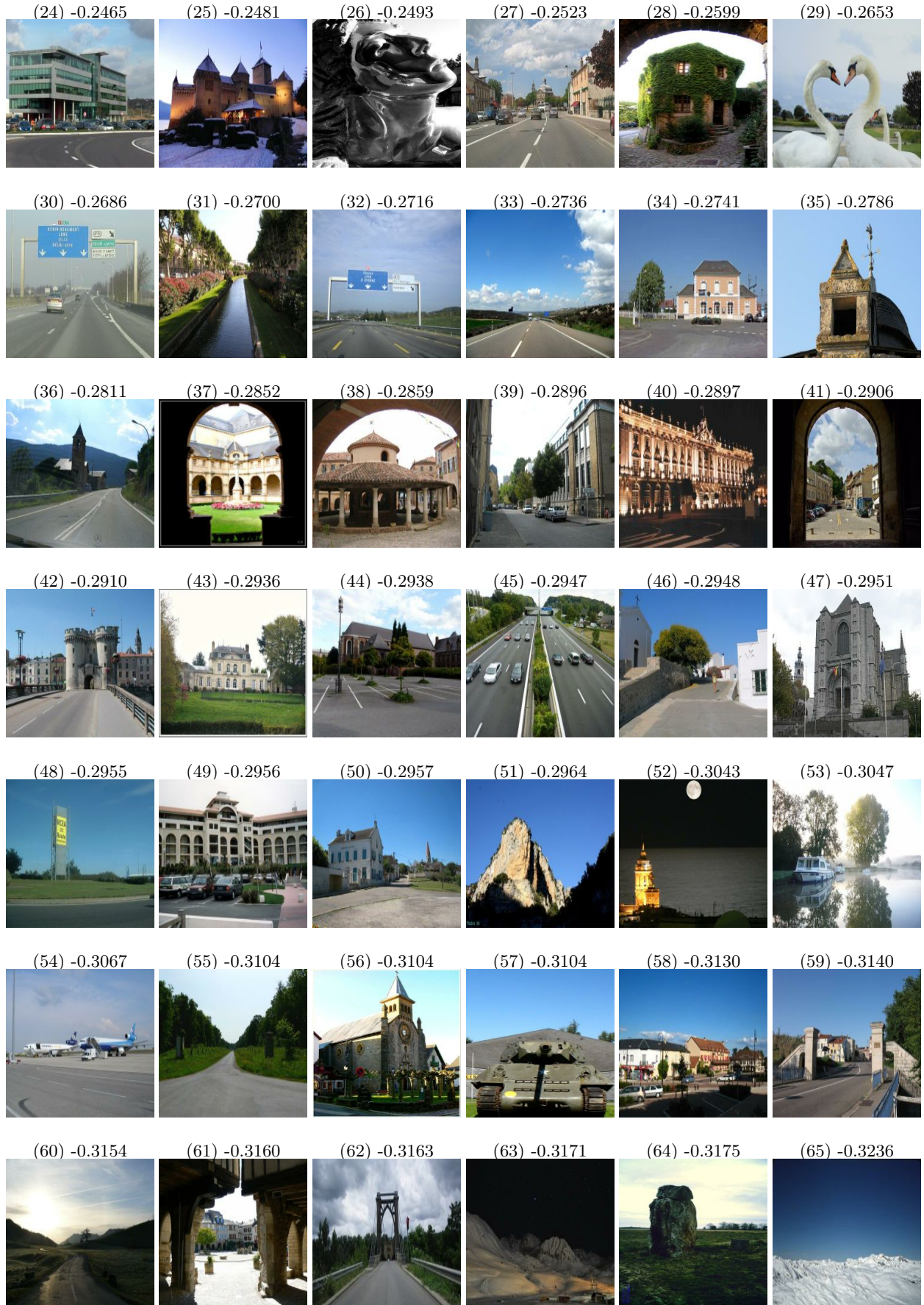


(22) -0.2417



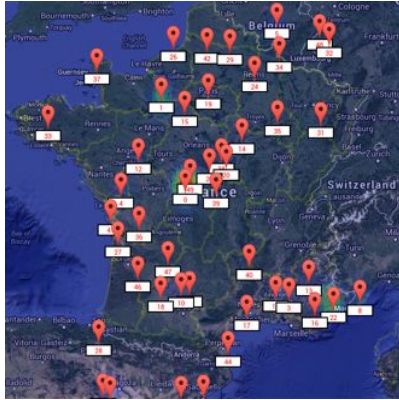
(23) -0.2440





2.4 open door

Locations for action "open door" predicted by our method



Likelihood map for action "open door" predicted by our method. Because detected locations are sparsely distributed and the density model's variance is small, visualization of likelihood map is biased by the highest scored location.

